

# rayLUX URBAN<sub>UBA48</sub>

## MULTI-PURPOSE WHITE-LIGHT

The RAYLUX Urban white-light LED illuminators are purpose designed to deliver lighting for multi-purpose applications such as footpaths, car park and campus lighting as well as lighting for surveillance cameras. All Urban series illuminators use the very latest surface mount LEDs to deliver a powerful, crystal clear, white-light. Urban illuminators are highly efficient, low consumption and require zero maintenance, allowing installers to deliver significant electrical and CO<sup>2</sup> savings.

RAYLUX Urban delivers quick start illumination, with no warm up period required. The unique Adaptive Illumination™ concept provides the flexibility to alter the angle of illumination on site to suit the required lighting specification. Every UBA48 or UBA32 unit is delivered with two lighting panels as per the main image.

Each unit is fitted with Active LED Life Control to carefully control LED output, delivering consistent illumination power and a projected working life of 10 years.

RAYLUX Urban illuminators are supplied as a complete head with power supply. Control features on the power supply include adjustable power output, photocell and telemetry control.



## ADAPTIVE ILLUMINATION™:



## POWERFUL

- **PLATINUM®** LED technology
- High Power - Low Running Costs
- Quick start

## FLEXIBLE

- Adaptive Illumination™
- Various angles (50° to 180°)
- Fully Controllable Power Supply

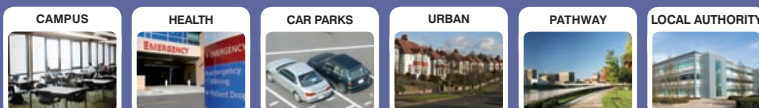
## RELIABLE

- 10 year life
- Active LED Life Control
- Vandal resistant

## CONTROLLED

- Excellent Colour Rendition
- Even Output Illumination
- Integrated Light Spill Shield

## APPLICATIONS



## TECHNICAL SPECIFICATIONS

### ILLUMINATOR

<i>Lumens:</i>	Source 110 per watt lm/w – luminaire 60+ lm/w
<i>Total lumens:</i>	4,700
<i>Angle:</i>	Various - See Part Codes
<i>Optics:</i>	SMT LED's
<i>Consumption:</i>	80W max
<i>Voltage:</i>	14V current controlled
<i>Colour Temperature:</i>	6500K
<i>Colour</i>	
<i>Reproduction Index:</i>	74-80+
<i>Weight:</i>	5kg (excluding brackets)
<i>Environmental:</i>	IP66
<i>Temp Range:</i>	-50 to +50°C (-58 to 122°F)
<i>Photocell:</i>	Integrated into luminaire
<i>Cable Length:</i>	0.5m (plus 5m cable/photocell extension kit)
<i>Colour:</i>	Silver (Other RAL colours available)
<i>Wavelength:</i>	White-Light
<i>Dimensions:</i>	443mm x 270mm x 76mm 17" x 11" x 3" approx (inc. light spill shield)

### POWER SUPPLY

<i>Input:</i>	Universal 100-240V AC auto-sensing
<i>Output:</i>	80W max
<i>Temperature:</i>	-50 to +50°C (-58 to 122°F)
<i>Weight:</i>	1.8kg
<i>Dimensions:</i>	160mm x 160mm x 90mm 6" x 6" x 4" approx

#### Standard PSU (included)

Adjustable photocell  
Adjustable power output  
Telemetry Control

**Alternative PSU Options include:** PRO and PRO-IQ intelligent range of power supplies with multi function options including remote dimming.

Lumen output depends upon final lens selection. Lumen output shown based on average between 10 and 50 degree angles.

Cool White as standard - Warm White options available. CRI published reflects range between Cool and Warm White.

### BRACKETRY

Wall, Top Stub and Hockey bracket options available. Contact RayLED

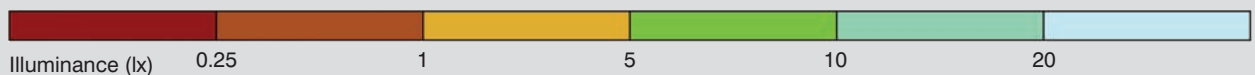
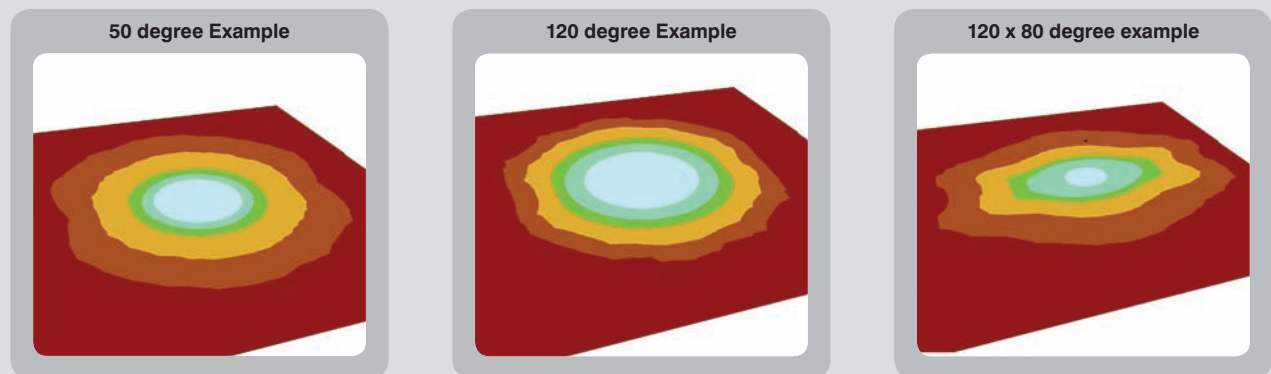
## 5 YEAR WARRANTY

All RayLED LED illuminators are provided with a 5 year warranty.

RayLED LED illuminators provide guaranteed long life!



### PHOTOMETRIC DIAGRAMS (Full photometry available)



**Notes:** Height 5m. Maintenance factor 0.85. 120 x 80 degree unit read (H) as left to right plan view and vertical (V) front to back

### PART CODES - ADAPTIVE ILLUMINATION

UBA-48-50	RAYLUX URBAN UBA-48, 80W Max, 50-100 degree AI, White-Light, inc PSU
UBA-48-120	RAYLUX URBAN UBA-48, 80W Max, 120-180 degree AI, White-Light, inc PSU
UBA-48-120H-80V	RAYLUX URBAN UBA-48, 80W Max, 120-180 Horizontal x 80 Vertical, Oval AI, White-Light, inc PSU